



## THE YORKSHIRE II

### AMENITIES LIST:

#### INTERIOR

Hardwood all downstairs  
Large oversized garage  
Free-standing tub  
Hand-held sprayer in Master shower  
Handicap friendly design  
LED stair lights  
Kwikset hardware  
Custom-built cabinets  
Tech Shield decking

#### SAFETY FEATURES

Fully operational security system & 2 keypads  
10-year structural warranty

#### APPLIANCE PACKAGE

Tankless water heater (2) when applicable  
Carrier HVAC with 7-day programmable thermostat  
Insulated garage door with external keypad

#### EXTERIOR

Screens on all operable windows  
Ridge vent roofing with 30-year architectural shingles  
(James Hardie exterior w/40-year limited warranty)  
20-year limited warranty Sherwin Williams Super Paint



[SSHINFO.com](http://SSHINFO.com)

290 Pierce Road  
Oakland, TN 38060  
(901) 466-1991



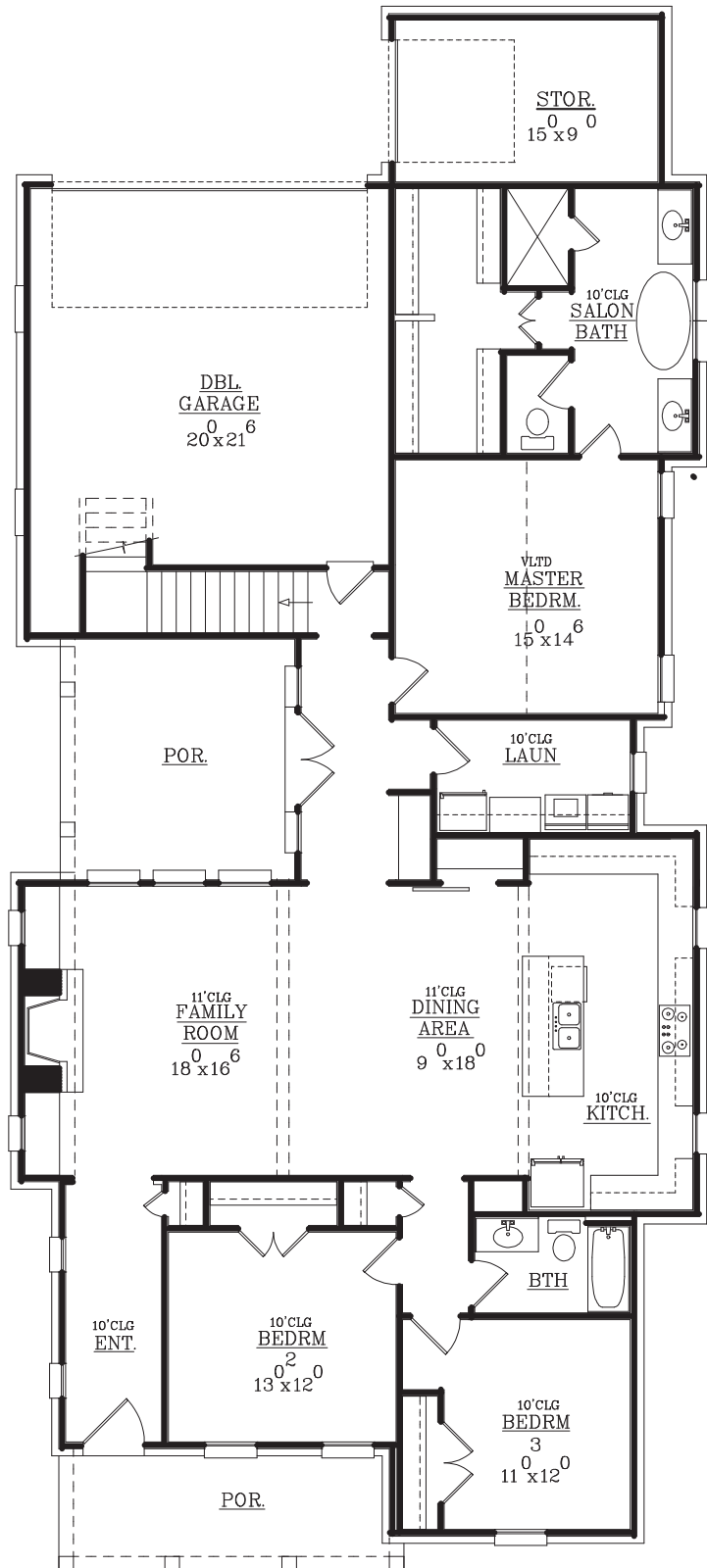
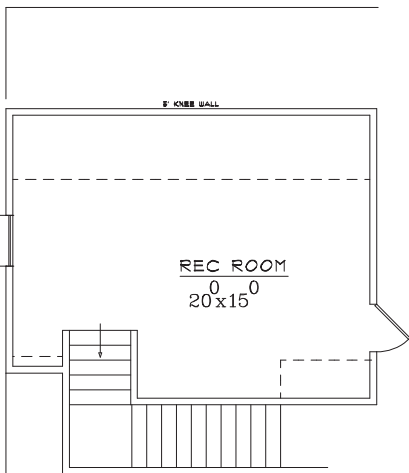
# THE YORKSHIRE II

HEATED DOWN: 2033 SQ FT  
 HEATED UP: 323 SQ FT  
 TOT HTD BRK: 2435 SQ FT

GARAGE & STOR: 693 SQ FT  
 PORCHES: 321 SQ FT

OVERALLS:  
 WIDTH: 40' DEPTH: 90'

COPYRIGHT © 2011 CLASSIC HOME DESIGNS



NOTE:  
 Indicated square footages are approximate and may not reflect the actual square footage as built. This is an architectural rendering intended for informational purposes only. All specifications are subject to change without notice.



SSHINFO.com

