



## THE MONTEBELLO II

### AMENITIES LIST:

#### INTERIOR

Hardwood all downstairs  
Large oversized garage  
Free-standing tub  
Hand-held sprayer in Master shower  
Handicap friendly design  
LED stair lights  
Kwikset hardware  
Custom-built cabinets  
Tech Shield decking

#### SAFETY FEATURES

Fully operational security system & 2 keypads  
10-year structural warranty

#### APPLIANCE PACKAGE

Tankless water heater (2) when applicable  
Carrier HVAC with 7-day programmable thermostat  
Insulated garage door with external keypad

#### EXTERIOR

Screens on all operable windows  
Ridge vent roofing with 30-year architectural shingles  
James Hardie exterior w/40-year limited warranty)  
20-year limited warranty Sherwin Williams Super Paint



SSHINFO.com

290 Pierce Road  
Oakland, TN 38060  
(901) 466-1991



# THE MONTEBELLO II

HEATED DOWN: 2355 SQ FT  
 HEATED UP: 320 SQ FT  

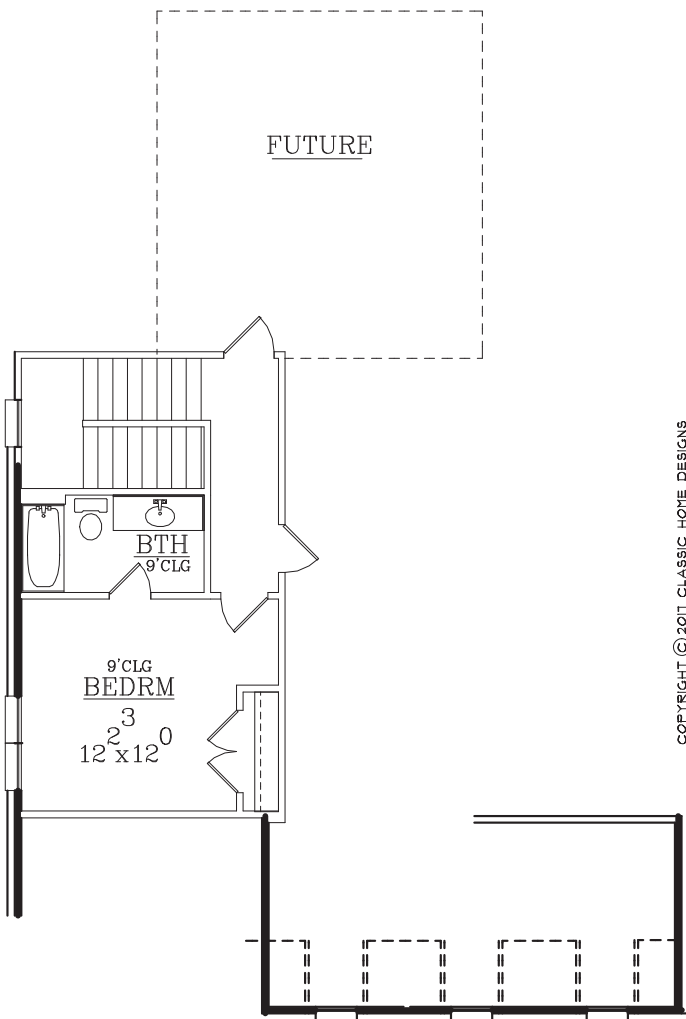

---

 TOTAL HEATED: 2675 SQ FT

GARAGE & STOR: 481 SQ FT  
 PORCHES: 373 SQ FT  


---

OVERALLS:  
 WIDTH: 41'      DEPTH: 90'



COPYRIGHT © 2011 CLASSIC HOME DESIGNS

NOTE:  
 Indicated square footages are approximate and may not reflect the actual square footage as built. This is an architectural rendering intended for informational purposes only. All specifications are subject to change without notice.



SSHINFO.com

